



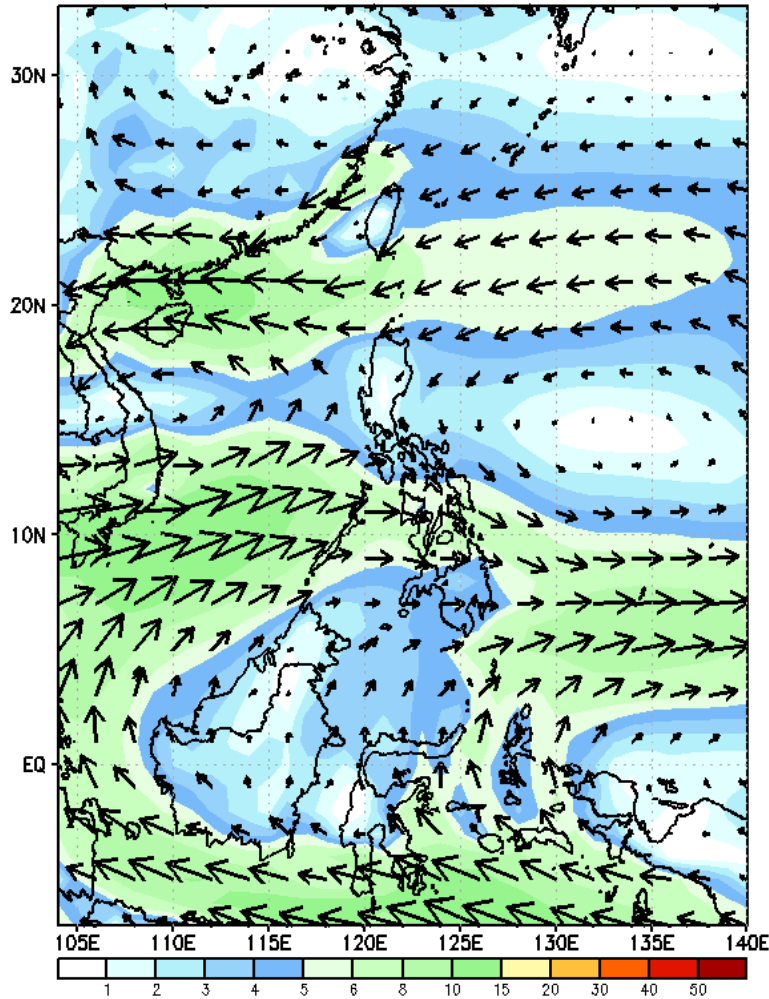
Week 1 & Week 2 Forecast for the Philippines using GEFS Model



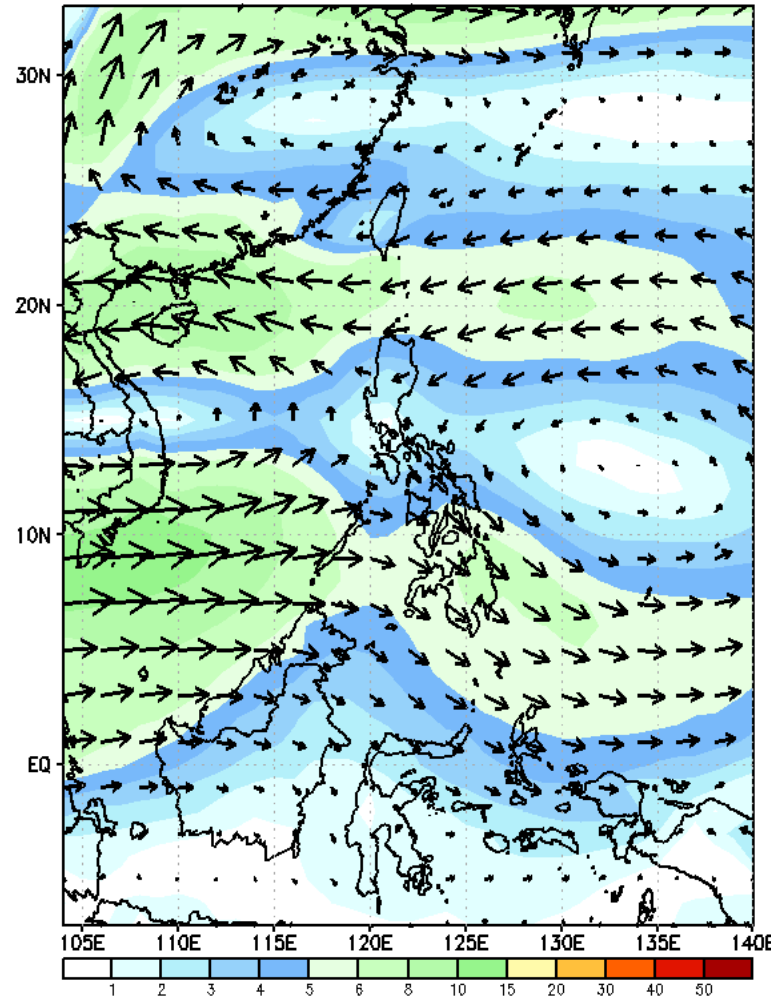
GEFS Week-1 Forecasts: Wind Forecast

Week 1: Sep 25- Oct 01, 2023

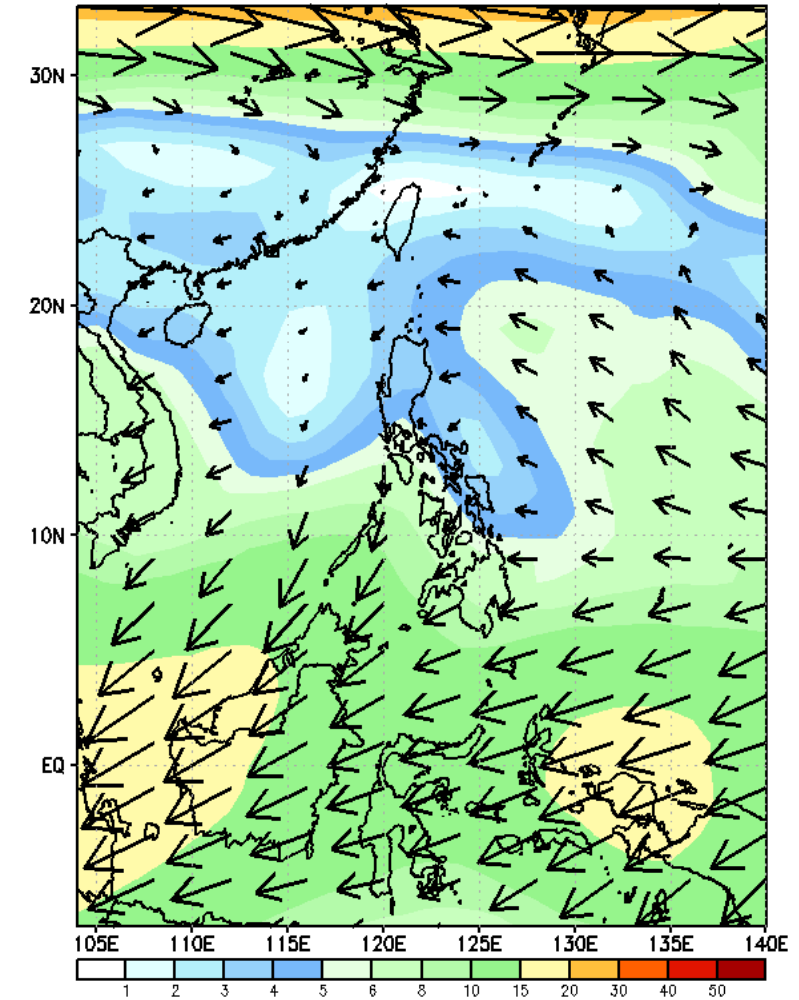
GEFS Week-1 850-hPa Wind Total
Valid: 20230925 - 20231001



GEFS Week-1 700-hPa Wind Total
Valid: 20230925 - 20231001



GEFS Week-1 200-hPa Wind Total
Valid: 20230925 - 20231001



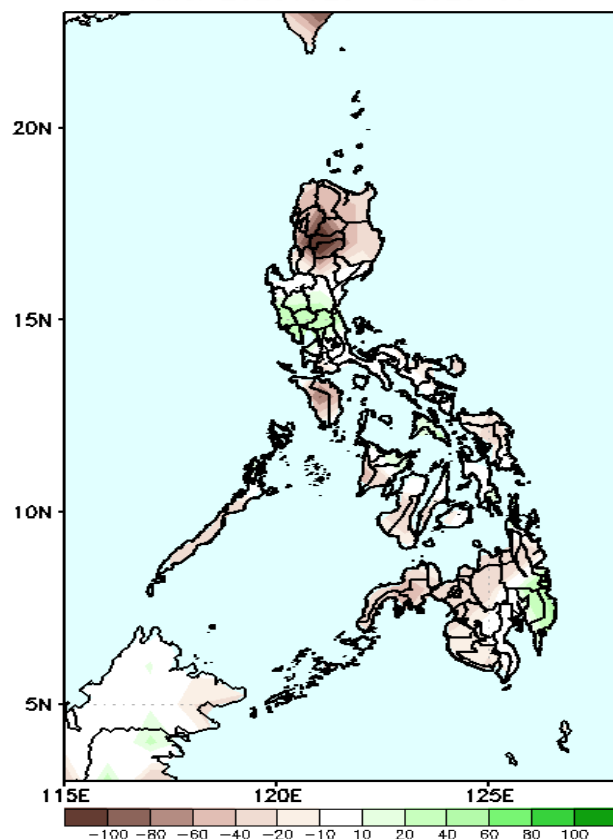
Southwest monsoon affecting the western parts of Luzon and Visayas.

Precipitation Anomaly and Exceedance Probability > 25/50 mm



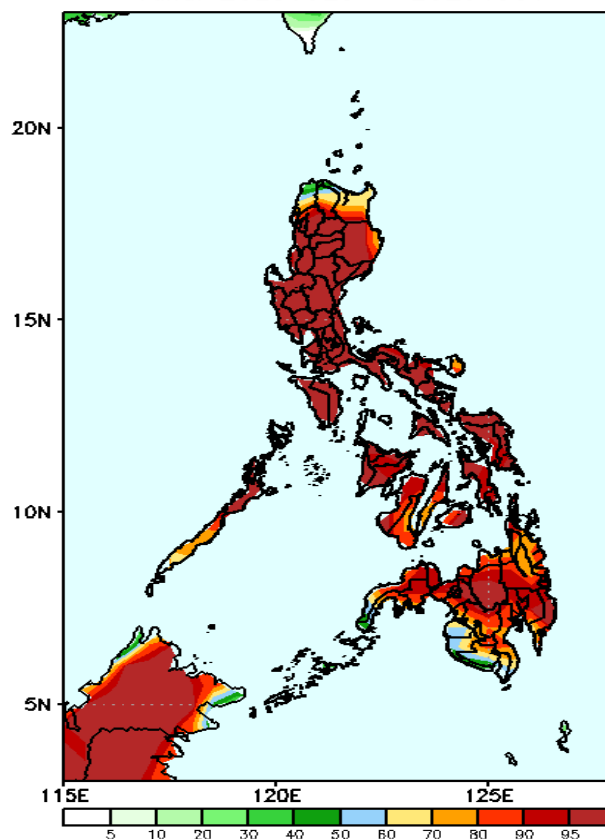
Week 1: Sep 25- Oct 01, 2023

GEFS Week-1 Precip Anomaly
Valid: 20230925 - 20231001



Rainfall deficit of 20-100mm is expected in most parts of the country except in some areas in Central & Davao Region where there is 10-40mm increase of rainfall

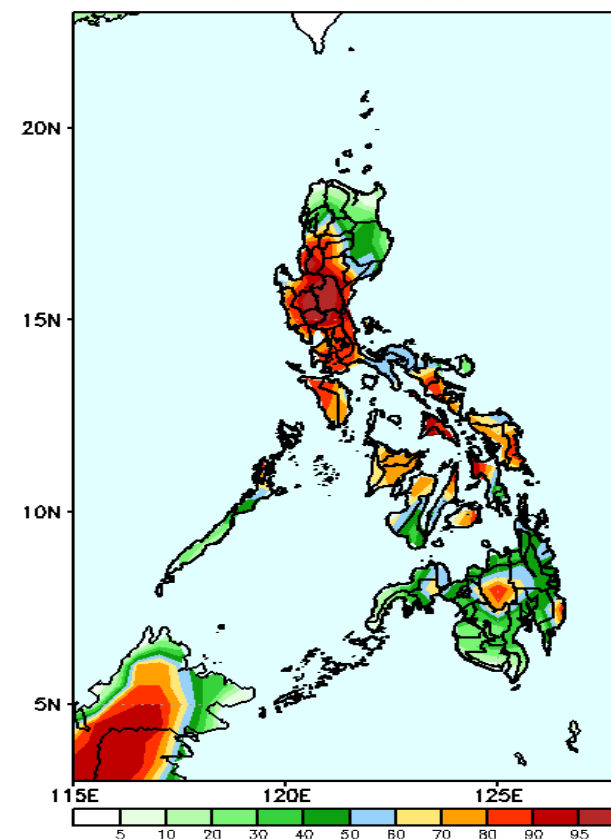
GEFS Week-1 Exceedance Prob. > 25mm
Valid: 20230925 - 20231001



Probability to Exceed 25mm

- High to very high in most parts of the country;
- Moderate to high over Ilocos Norte and the Southern portion of Mindanao.

GEFS Week-1 Exceedance Prob. > 50mm
Valid: 20230925 - 20231001

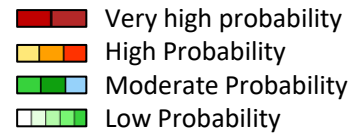


Probability to Exceed 50mm

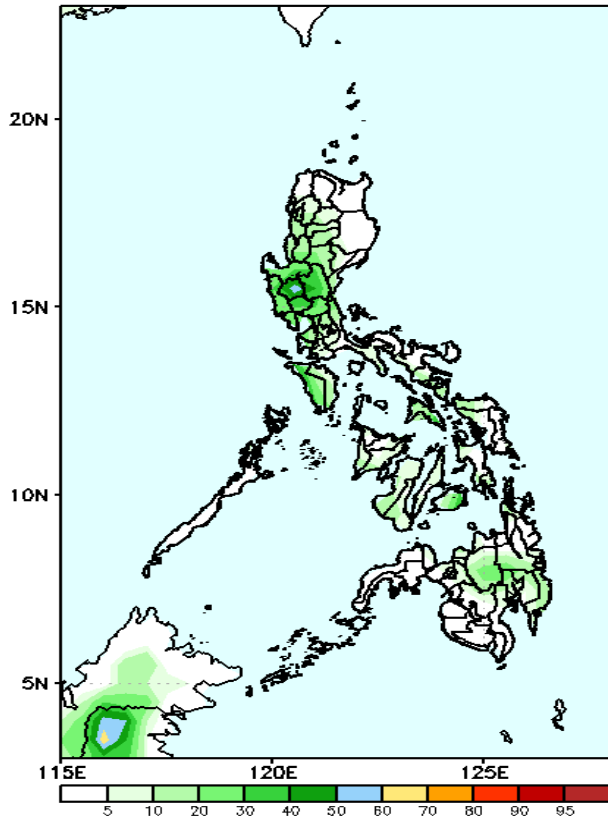
- High to very high in the southern portion of Northern Luzon and most of Central Luzon;
- Moderate to high over Southern Luzon, Visayas and Mindanao;
- Low to moderate over the rest of Luzon.

Exceedance Probability > 100/150/200 mm

Week 1: Sep 25- Oct 01, 2023



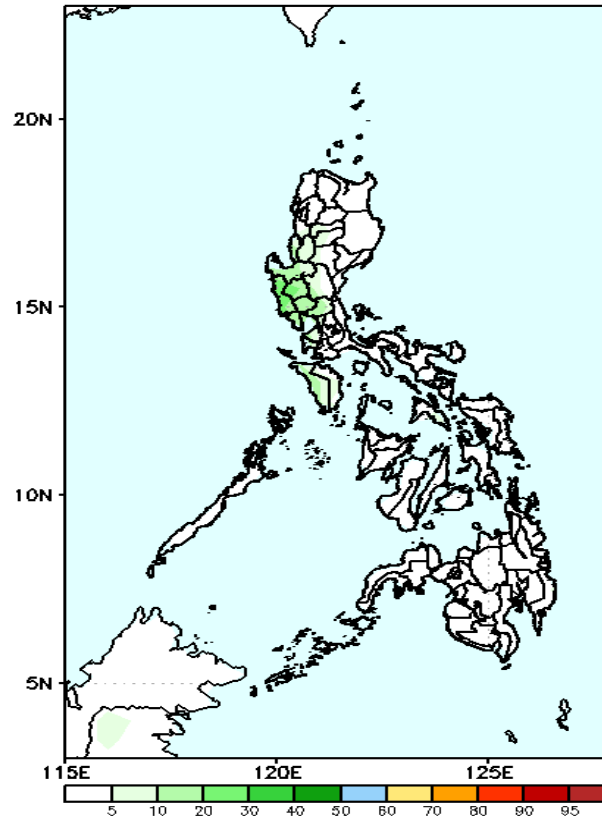
GEFS Week-1 Exceedance Prob. > 100mm
Valid: 20230925 - 20231001



Probability to Exceed 100mm

- Low in most parts of the country.

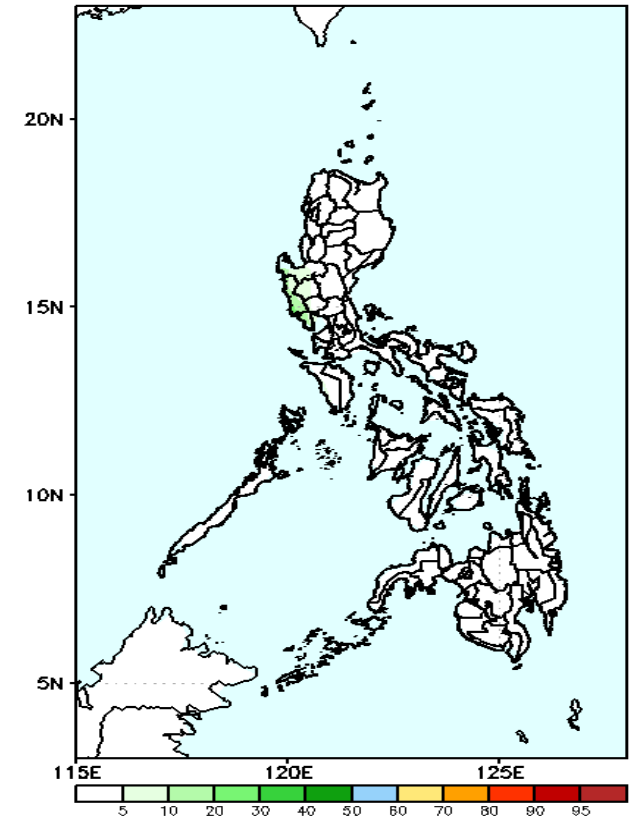
GEFS Week-1 Exceedance Prob. > 150mm
Valid: 20230925 - 20231001



Probability to Exceed 150mm

- Low in most parts of the country.

GEFS Week-1 Exceedance Prob. > 200mm
Valid: 20230925 - 20231001



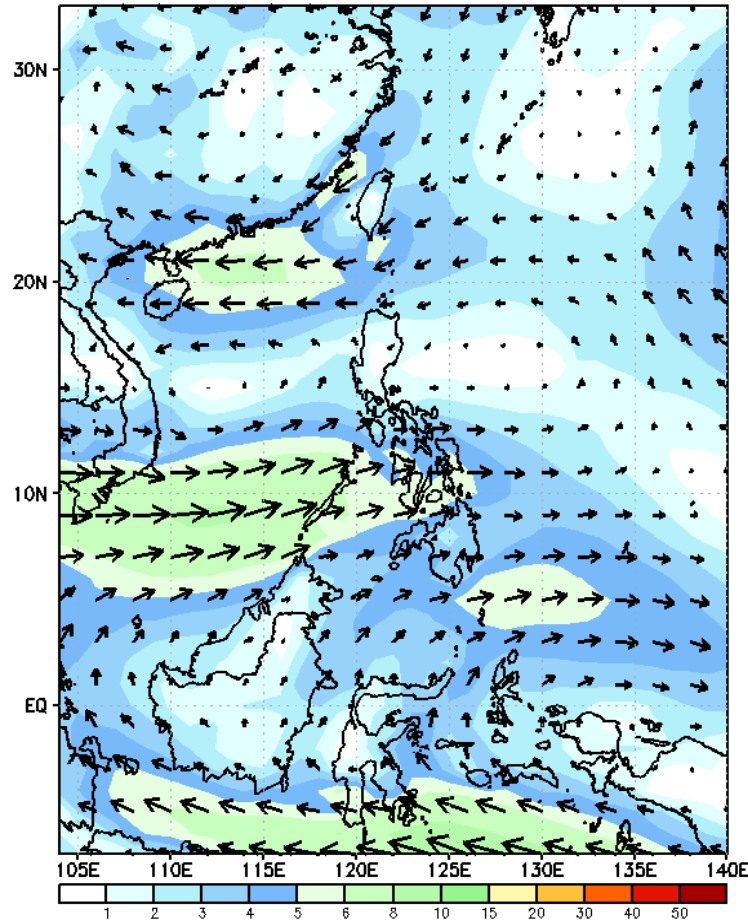
Probability to Exceed 200mm

- Low in most parts of the country.

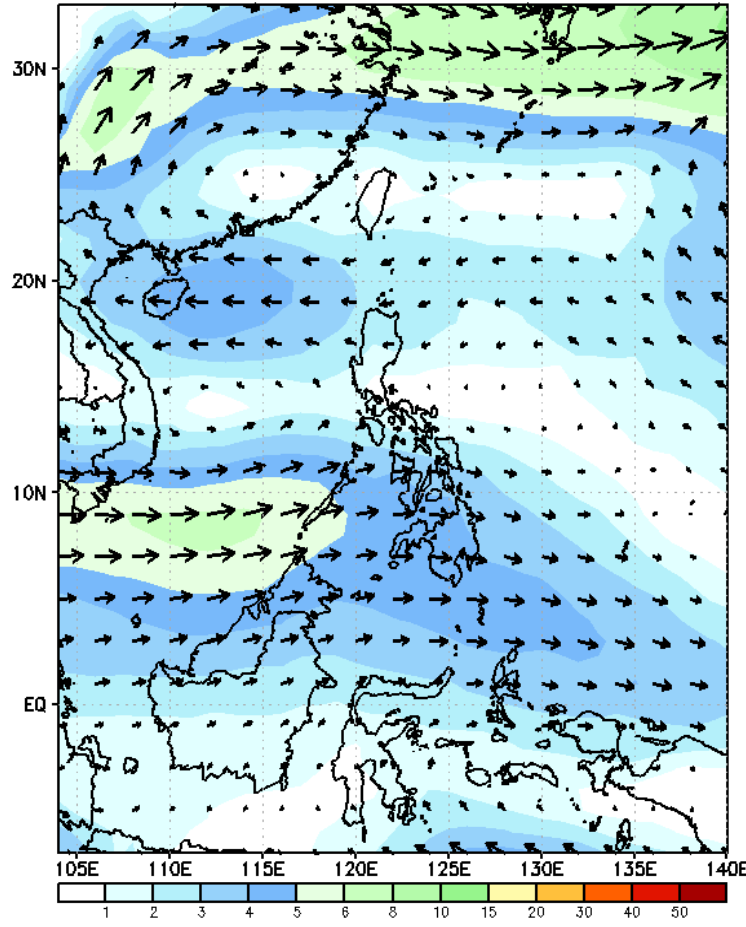
GEFS Week-2 Forecasts: Wind Forecast

Week 2: Oct 02-08, 2023

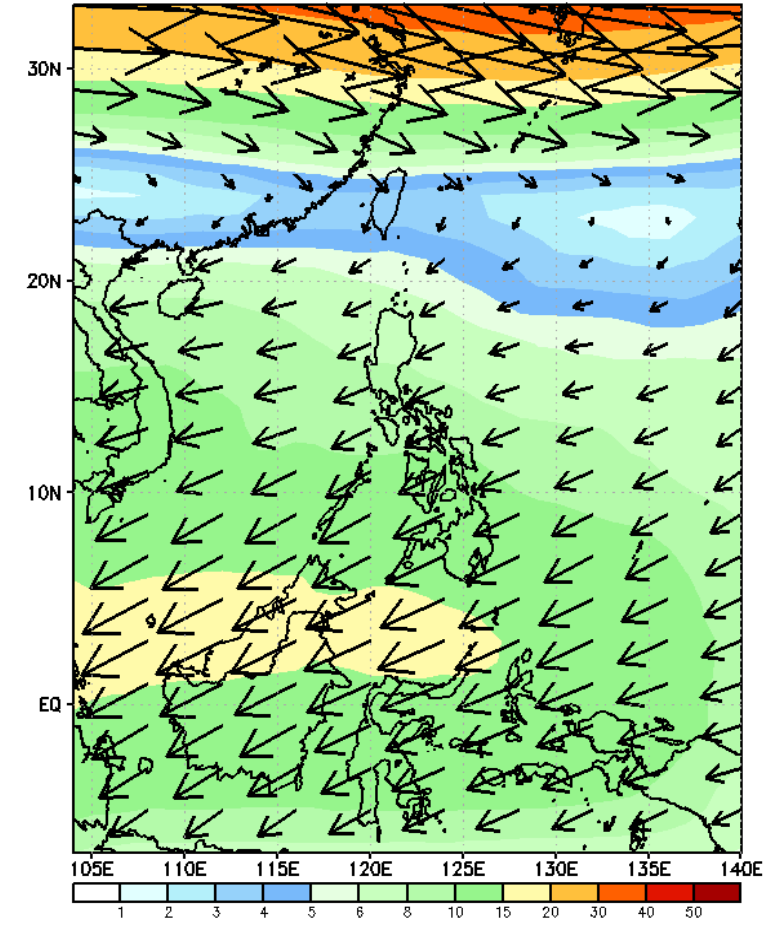
GEFS Week-2 850-hPa Wind Total
Valid: 20231002 - 20231008



GEFS Week-2 700-hPa Wind Total
Valid: 20231002 - 20231008



GEFS Week-2 200-hPa Wind Total
Valid: 20231002 - 20231008



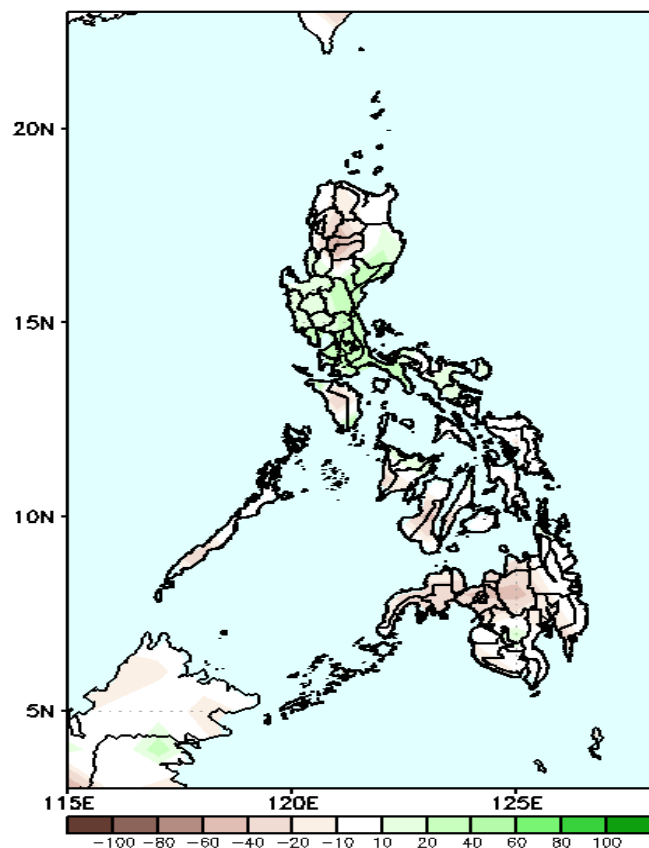
Weak Southwest Monsoon is forecasted to affect the western sections of the country.

Precipitation Anomaly and Exceedance Probability > 25/50 mm



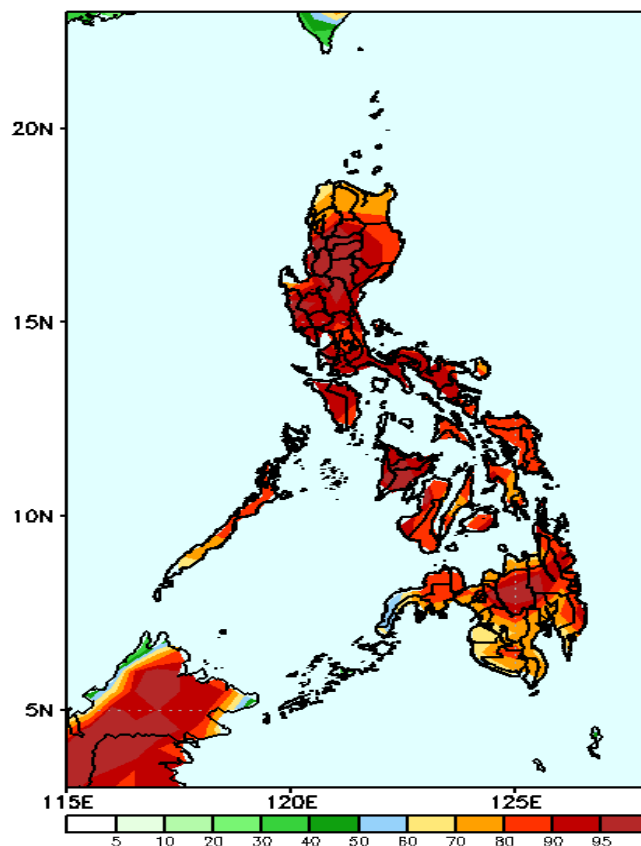
Week 2: Oct 02-08, 2023

GEFS Week-2 Precip Anomaly
Valid: 20231002 - 20231008



Rainfall deficit of 20-60mm is expected in most parts of the country except in some areas in Central & Southern Luzon where there is 10-40mm increase of rainfall

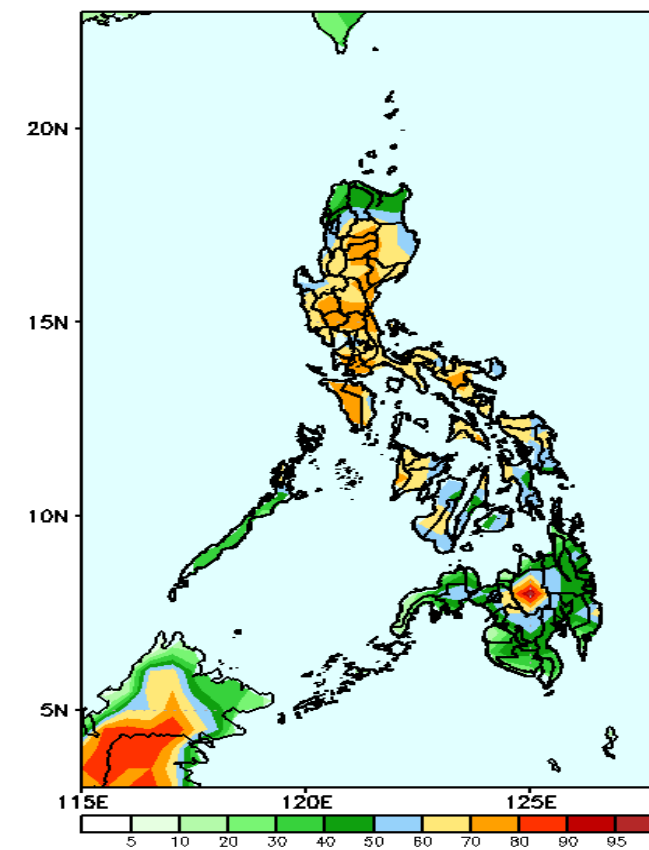
GEFS Week-2 Exceedance Prob. > 25mm
Valid: 20231002 - 20231008



Probability to Exceed 25mm

- High to very high in most parts of the country.

GEFS Week-2 Exceedance Prob. > 50mm
Valid: 20231002 - 20231008



Probability to Exceed 50mm

- Moderate to high over most parts of the country.

ong
IASA

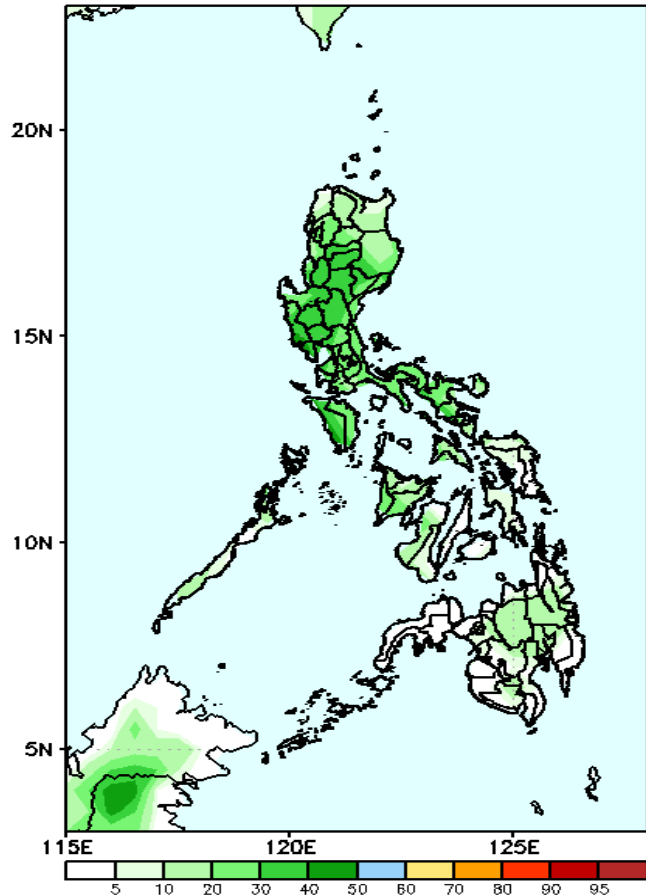


Exceedance Probability > 100/150/200 mm

Week 2: Oct 02-08, 2023

Very high probability
High Probability
Moderate Probability
Low Probability

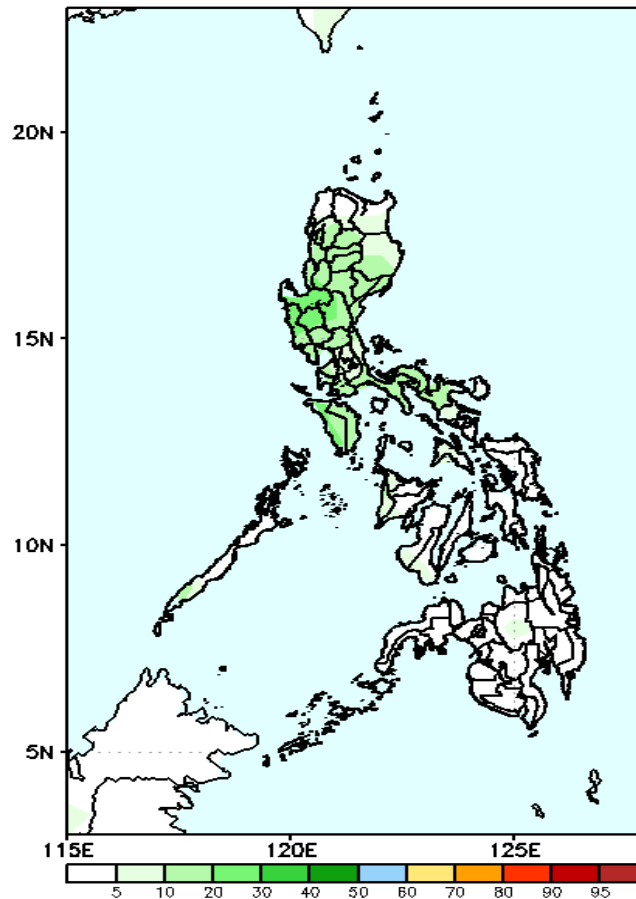
GEFS Week-2 Exceedance Prob. > 100mm
Valid: 20231002 - 20231008



Probability to Exceed 100mm

- Low to moderate over Luzon;
- Low over the rest of the country.

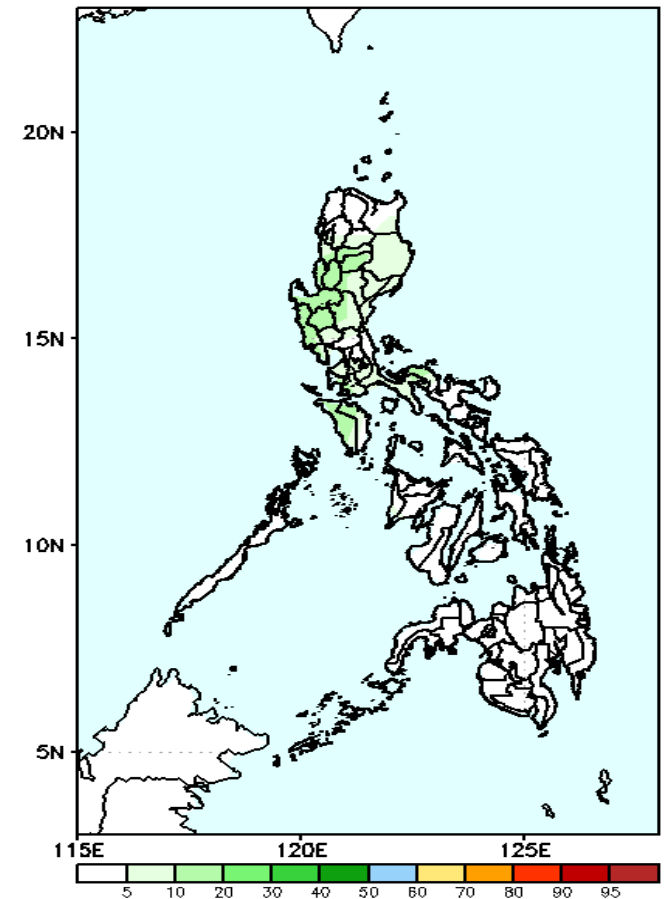
GEFS Week-2 Exceedance Prob. > 150mm
Valid: 20231002 - 20231008



Probability to Exceed 150mm

- Low in most parts of the country.

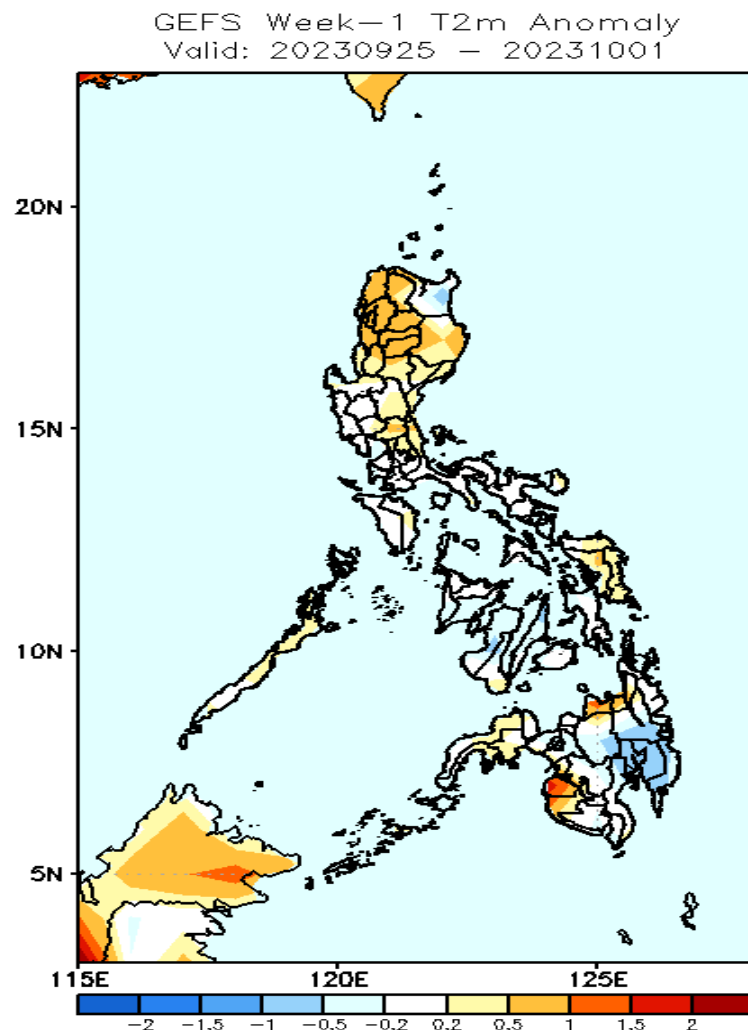
GEFS Week-2 Exceedance Prob. > 200mm
Valid: 20231002 - 20231008



Probability to Exceed 200mm

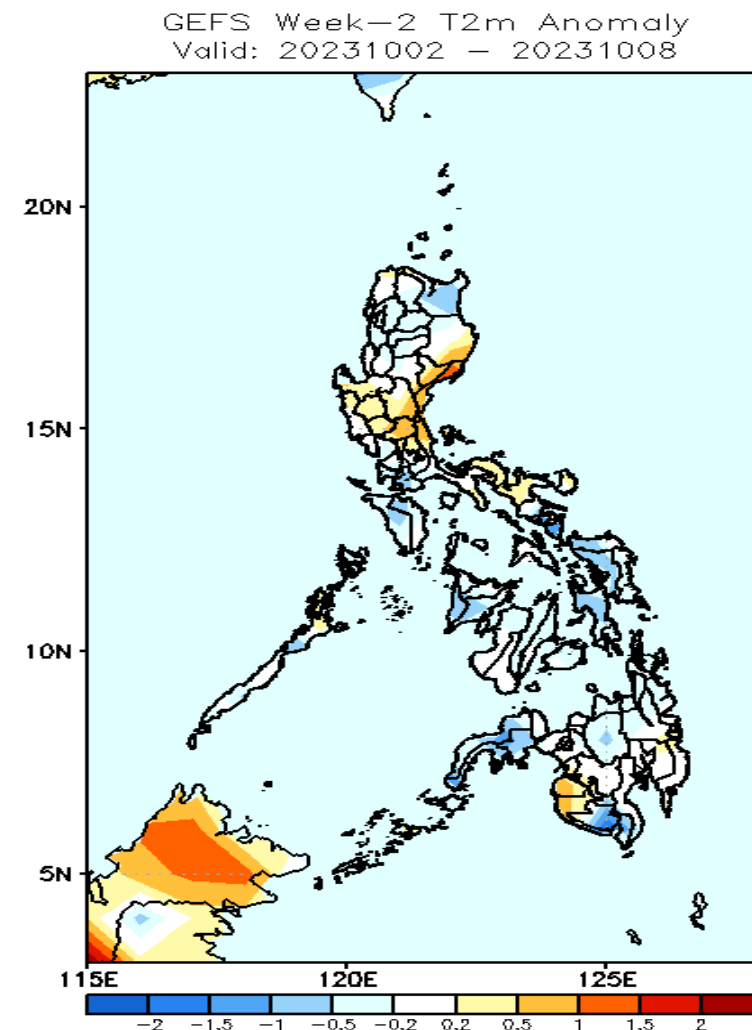
- Low in most parts of the country.

GEFS Week-1 & 2 Forecasts: T2m Anomaly



2m Temperature Week 1: Sep 25- Oct 01, 2023

Average to warmer than average surface air temperature will likely experience in most parts of the country except in Davao Region where slightly cooler temperature is expected.



2m Temperature Week 2: Oct 02-08, 2023

Average to cooler than average surface air temperature will likely experience in most parts of the country except in some areas in eastern & central Luzon, Maguindanao & Sultan Kudarat where slightly warmer to warmer than average temperature is expected.